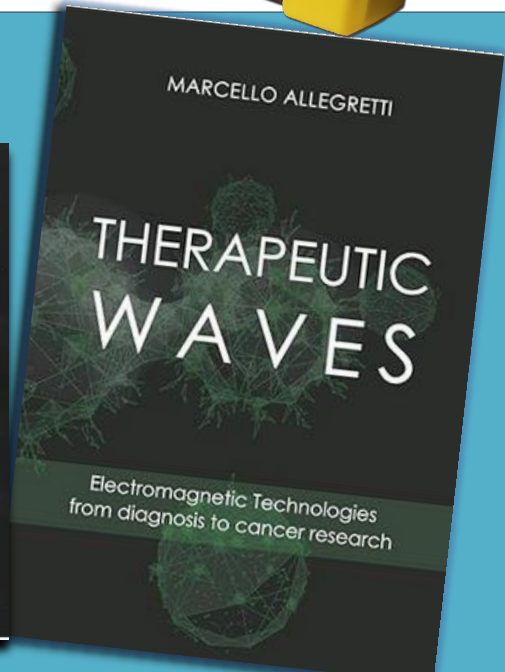
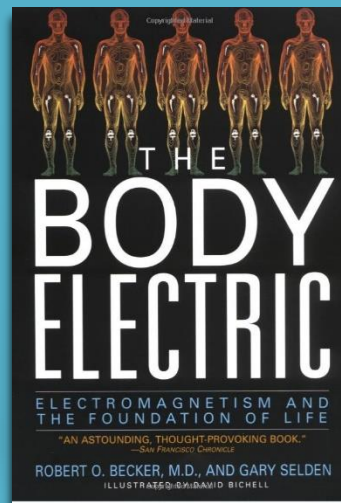
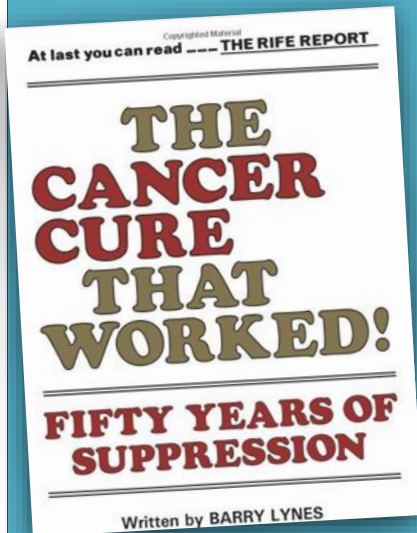




Resonance Therapy Manual



Contents

- Rife's Generators
- Resonance Therapy
- Pathogens
- Electrodes
- Treatment management
- The Treatment list Broad-spectrum Treatments
- Supportive Treatments
- The Software
- The Health-Mat

INTRODUCTION:



The rediscovering of so-called Rife generators has been mainly thanks to Dr Hulda Clark's book "The Cure for All Diseases," in which she promoted the use of generators to destroy pathogens, and Barry Lynes's book "The Cancer Cure That Worked," published in 1987. The media also began investigating energy technology during the start of the AIDS epidemic in the 1980s as a more cost effective and healthier alternative to pharmaceuticals.

This manual explains the thought process for treating the sick with the Biosonic Rife generators



Dr. Royal Rife: The inventor of the original “wondrous machine”



Although scientists- inventors like Nicola Tesla and Georges Lakhovsky experimented with so-called healing machines, it was Dr Royal Raymond Rife who firstly shown more substantial successful results with his cancer-destroying machine.



Dr. Royal Rife (1888 – 1972) was one of the greatest scientific geniuses of the 20th century. Not only was Dr Rife a brilliant scientist, but he was persistent and did not stop until he got successful results. Where technology didn't exist, Rife invented it — the very first micromanipulators, micro-dissectors, and heterodyning ultraviolet microscopes.

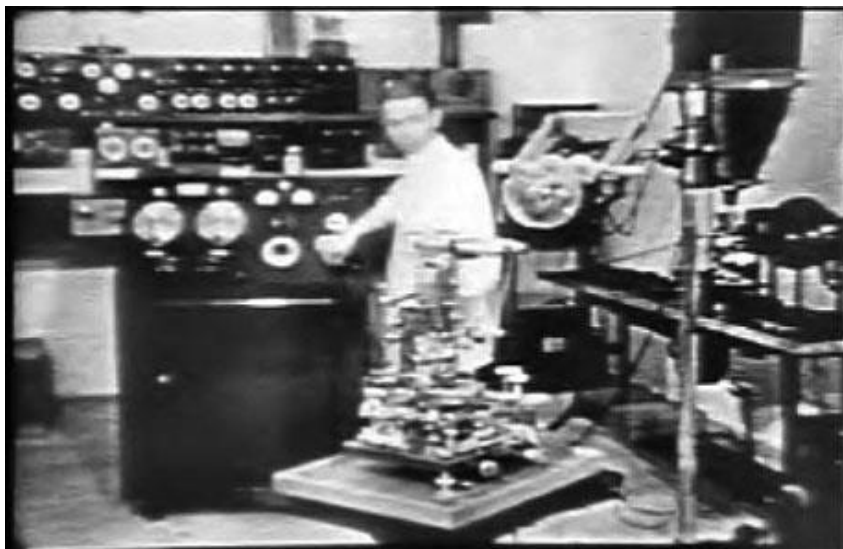
He won 14 government awards for scientific discoveries and an honorary medical degree from the University of Heidelberg.

Rife was fortunate that millionaires of his time, like Henry Timken, sponsored his research, which included the Universal Microscope, with 5,682 parts. With this superb microscope, Dr Royal Rife became the first person to actually see a live virus. Using the Universal Microscope he observed cancer viruses as they changed their size and form. He discovered that exposing a virus to certain frequencies of radio Waves killed it quickly. Years of experimentation led to Rife's invention of his Frequency Instrument, a device that produced the exact frequencies needed to destroy various viruses.

He began researching a cure for cancer in 1920, and by 1932, he learned how to destroy it in laboratory cultures and went on to cure cancer in animals. In 1934, he opened a clinic which successfully cured 16 of 16 cancer cases within three months time. Working with some of the most respected researchers in America, along with leading doctors from Southern California, he destroyed cancer in patients with his machine. A special research committee of the University of Southern California oversaw the laboratory research and the experimental treatments until the end of the 1930s. Follow-up clinics conducted in 1935, 1936 and 1937 by the head of the U.S. C. Medical Committee verified the results of the 1934 clinic. Independent physicians utilizing the equipment successfully treated as many as 40 people per day during these years. In addition to curing cancer and other deadly diseases, degenerative conditions such as cataracts were also reversed.

Because of the side effects of so many other cancer drugs and treatments, the concepts from Nicola Tesla, Georges Lakhovsky, and Royal Raymond Rife are now rediscovered, evaluated, and new devices are being developed at affordable cost so that everyone can afford a “wondrous healing machine” that assists the body’s ability to heal itself.

Dr Rife had one of the best-equipped laboratories in the world at his time, thanks to benefactors who had the foresight to believe in his research. Unfortunately, it was only in the 1990s that, thanks to the advent of the microchip, one could begin manufacturing generators according to his guidelines on a grand scale.



How does the principle of Dr. Rife's Machine works

The concept of Rife frequencies

The scientific phenomena of sympathetic resonance and mortal oscillatory rate (M.O.R.) are the basis of Dr Rife's machine and, subsequently, the more modern **Biosonic Generators**.

Sympathetic resonance, or sympathetic vibration, is a harmonic phenomenon in which a vibratory body responds to external vibrations to which it has a harmonic likeness.

Each species of life has its own unique electronic signature. Every microorganism has its own specific mortal oscillatory rate. The M.O.R. frequency that is applied to destroy a particular organism is based on this individual electronic signature, much like a fingerprint. Because it differs from everything else, that specific frequency affects ONLY that type of organism and nothing else.

Every biochemical compound oscillates at its own distinct frequency pattern. Therefore, every living thing has its own unique electromagnetic signature, which is genetically determined and, therefore, unique and unlike any other species.

Just as a wine glass is shattered only by a particular frequency, so by applying a generator to generate the MOR frequencies, only the disease organisms whose oscillation pattern corresponds to the modified patterns are destroyed. Also, think of a balloon filled with water. Under a microscope, many organisms look like little balloons filled with water. They have membranes filled with liquid—very similar to water-filled balloons. Now, start shaking the balloon vehemently. If you shake it twice a second, the frequency is 2 Hz.

Keep on shaking it, and the balloon will eventually perish. The **Biosonic Generators** can generate frequencies of more than 100,000 Hz. This means they can literally "shake" pathogens to pieces while not harming the human body, making this the safest method to combat infectious diseases and ailments.

By applying these scientific phenomena, a new therapy was born by applying generators to destroy the direct cause of many diseases. A "generator" is used to generate these MOR frequencies in resonance therapy. Regular sessions of resonance therapy are claimed to especially strengthen the body's immune system against infective deceases. Today, resonance therapy (Rife therapy) is one of the few therapies known to be free of side effects.

Resonance therapy with a Biosonic Generator

What is a Rife Generator?

A Rife generator is a generic name for basically a frequency generator that can generate square waves as well as to generate those frequencies identified by Dr. Royal Rife to destroy a wide range of bacteria, fungi and viruses and even cancerous cells. A "generator" is used in resonance therapy.

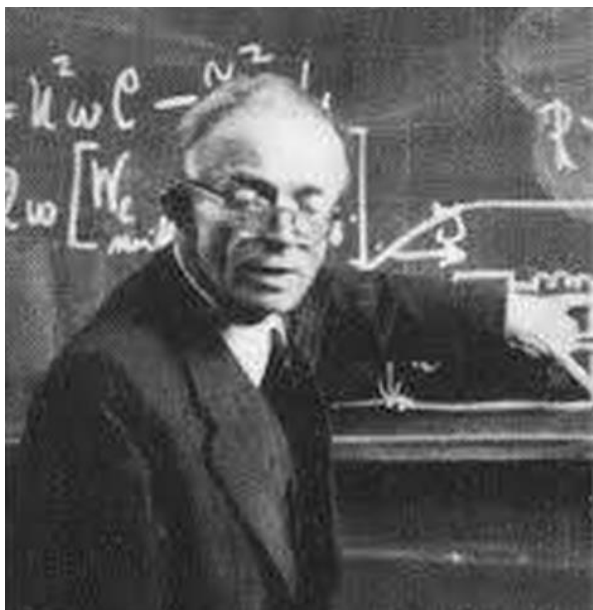
The pioneering work undertaken by Dr. Royal Rife, Nicola Tesla, Georges Lakhovsky, and the advances in science and technology over the past few decades have allowed scientists and engineers to continue research into the application frequencies. The **Biosonic Generators'** design and their development were based on accumulated research data spanning many years. Not only did the designers concentrate on the bio-resonance generation but also on the use of the most advanced electronic components available. This broad front design approach forced them to give close attention to the user interfacing of the instrument as well as making ease of use top priority.

A Biosonic Generator is a wide range frequency generator that has been designed to generate both kinds of healing frequencies (Pathogen destroying frequencies as well as healing bio-frequencies). A Biosonic Generator is therefore not just a so-called "Rife machine" but a complete electrotherapy device. Not only does it generate **the pathogen destroying frequencies** but also **the body healing frequencies**:

Pathogen destroying frequencies. Dr Rife discovered that that by applying the so-called MOR (Molecular Oscillation Pattern) frequencies, one can **destroy pathogens** including cancerous cells.

Body healing frequencies (Bio-frequencies): Frequencies that body organs react to. In the late 1940s, Dr Reinhard Voll (Photo on the right), a German medical doctor and engineer, found that the body's organs also react to frequencies. These frequencies are referred to as bio-frequencies. An excellent example of applying bio-frequencies to an organ is if one gets a heart attack and the heart is revived with a defibrillation device.





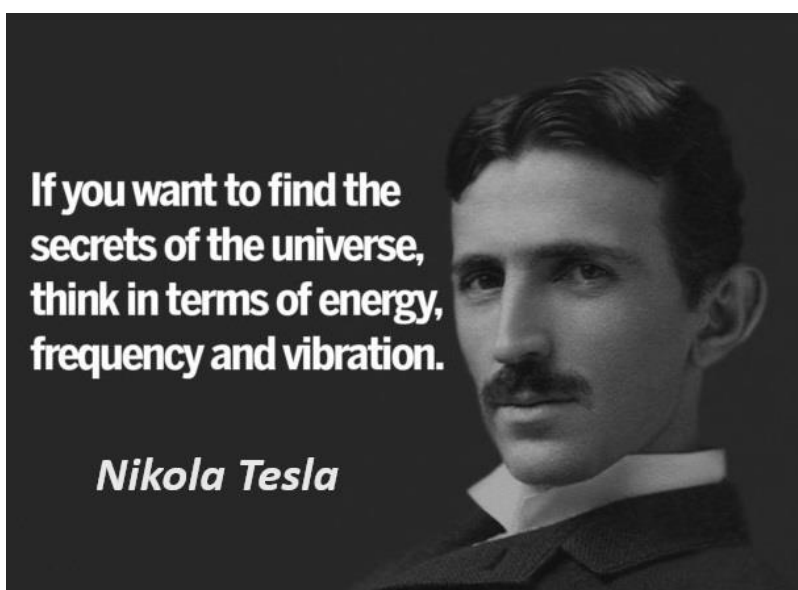
Prof. Winfried Schuman

Health and psychological well-being can also be created by specific frequencies. Prof. Winfried Schuman, for instance, found in the 1952 that the earth's geomagnetic field resonates between 7.8 and 8.0 cycles per second (Hz). When one applies these frequencies in Resonance Therapy, a calming effect is obtained, and that is why these frequencies are included in the **Biosonic Generator's "Neuro"** treatment.

Frequencies **to destroy** a specific pathogen or **to treat** a specific organ in your body are listed on your **Biosonic Generator's** built-in treatment list.

By following the guidelines of pioneers like Dr Royal Rife, **Biosonic Technologies** has implemented the latest research and development in "Rife" treatments to create a wondrous healing machine. The **Biosonic Generator**.

By being in the "Rife" business since 1999, and thanks to the expert advice of Rife "gurus" worldwide and years of research and development, BIOSONIC Tech has also been able to draw guidelines to implement bio-resonance therapy in the most effective way. The following pages explain the concept and modalities of Resonance Therapy.



Resonance Therapy



The aim of Resonance therapy is to treat illnesses caused by pathogens and dysfunctional organs in a holistic manner.

The human body has a fantastic immune system in place to ward off ailments and diseases. In the past 100 years, because of a tremendous strain on the body's immune system caused by toxic food, water, polluted air, and worst of all toxic medicine, the body cannot cope to fend for itself. Pharmaceutical companies appeared to come up with solutions, but they have just worsened the situation. Because of oversubscribed anti-biotic medicines by ignorant medical practitioners (Those people we trusted our health with), our bodies have hardly any defense against the new super viruses, bacteria, and parasites.

We are not only poisoned with polluted air, but food manufacturers in turn add dangerous and many times carcinogenic ingredients to enhance flavor, artificially coloring food to have a more "acceptable" appearance and preserving food in unnatural ways. Not only are we fed toxic food, but our food is depleted of healthy vitamins and minerals. It became the norm to drink daily a handful of pills that contain minerals, vitamins, and other nutritional supplements as our food cannot provide us with our basic nutritional needs anymore.

The number of diseases and ailments has quadrupled in the last few decades. The statistics of cancer in the year 1900 was about one person out of every 2000. 100 years later and the statistics in the Western (Polluted) societies are that 1 out of 10 people have cancer.

We live in an age of super viruses such as the Coronavirus, Ebola, HIV, and TB and "new" diseases such as multiple sclerosis, motion neuron disease, and fibromyalgia that become more prevalent while cases of autism and hyperactivity are also growing.

The advent of the Coronavirus pandemic has confirmed the inadequacy of medicines. Technology such as the **Biosonic Generator** is available to destroy pathogens very effectively with no side effects to the user.

Glossary of terminology used in Resonance Therapy:

Treatment: a session during which a series of frequencies addresses a specific health condition. A treatment consists of one or more frequencies. Each frequency addresses a particular pathogen or organ. The frequencies in asthma treatment will, for instance, address pathogens such as Aspergillus and streptococcus and bio-frequencies that act on organs, such as 20 Hz, which opens arteries.

Please note that the Rife Generators' list of stored treatments is a compilation of treatments that have been included because of their effectiveness. Many generators on the market may have many more treatments stored on them but are usually untested. The user is then confronted with hundreds of treatments, for example, for cancer, which the manufacturers just downloaded from the Internet from dubious sources. The user is then expected to experiment with untested treatments to find the treatment that works. A user with a terminal disease has no time to experiment.

Sets (Groups): Relevant treatments are grouped together to run one after the other for a duration of about 6 hours or more. Sets are ideally suited to use while sleeping on the PEMF **Health Mat** (See page 28) connected to your **Biosonic Generator**. Make your own sets or treatments with the Biosonic Software (See page 27)

Protocol: A series of treatments as suggested to address a particular health problem. E.g. Bilharzia Protocol: 1 Detox treatment. Then every day a session of the "Parasite" treatment. As well as a daily session of the "Bilharzia" treatment.

The meaning of the abbreviations on the treatment list

B = Bipolar means it allows both AC and DC currents to flow. When a treatment has a "B" setting then there are frequencies included in this treatment to address parasites as well.

"D" = "Dwelling" (also called "wobble"): This feature allows frequencies to be moved one frequency higher and lower than the target frequency to ensure that mutating viruses are still within the destroying range.

The modulate function ("M") is how wide we "dwell".

All these settings have already been set on the Treatment Lists that are on the device.

When you see the same treatment listed twice with different numbers at the end (such as "Bone fracture 1" and "Bone fracture 2"), it's one long treatment that has been split into two or more shorter parts. It's best to complete all the sections in one day if possible. If that's not feasible, you can complete the divided treatments in separate sessions within a three-day period.

Basic medical terms everyone should know:

Medical suffixes to indicate a health condition. Suffixes are word parts that are located at the end of words. Examples are:

Suffix	Meaning	Medical Term Example
-algia	pain	myalgia
-carcinoma	cancerous tumour	adenocarcinoma
-esis	condition of	enuresis
-ism	condition	hirsutism
-itis	inflammation	colitis

Causes of diseases: Pathogens: viruses, bacteria, fungi, protozoa, and helminths (worms). Resonance Therapy is ideally suited to treating the causes of diseases.

Symptoms: Something that a person feels or experiences that may indicate that they have a disease or condition. For instance, pain and breathing problems in the case of Covid 19.

Inflammation: When an invader (like a virus) tries to enter your body or you get injured, your immune system sends out its first responders. These are inflammatory cells and cytokines (substances that stimulate more inflammatory cells). These cells begin an inflammatory response to trap germs or toxins and heal injured tissue. Inflammation can cause pain, swelling or discolouration. These are signs that your body is healing itself. In medical terminology, inflammation is indicated by the noun suffix “-itis”. Inflammation in the tonsils is called “tonsillitis”. Treat inflammation with the Infections and Inflammation treatments and the Circulation treatment if swelling is part of the symptoms.

Disease: A disease is a disorder that affects how your body functions and is more likely to have a known cause, a distinct course, and established treatments. With COVID-19, the cause is, for example, the coronavirus, which can be treated with the Coronavirus treatment. The COVID-19 symptoms, such as nausea, headache, and breathing problems, can also be treated with Resonance Therapy.

Genetic Disorders: Genetic disorders occur when a mutation affects your genes. One cannot treat the causes of the genetic disorder as one is born with that specific DNA pattern, but one can treat some of the symptoms, such as breathing problems, with Resonance Therapy (for instance, with the Respiratory Treatment)

Syndrome: a group of symptoms which consistently occur together, or a condition characterized by a set of associated symptoms. For example, acquired immune deficiency syndrome, carpal tunnel syndrome, chronic fatigue syndrome, etc. One has to identify the different symptoms of the particular syndrome and treat each of them with Resonance Therapy.

The main causes of diseases

The agents that cause diseases fall into five groups: viruses, bacteria, fungi, protozoa, and helminths (worms). Protozoa and worms are usually grouped together as parasites. A pathogen is any agent that can cause disease. Viruses, bacteria, parasites, and fungi are all examples of pathogens. The coronavirus is a pathogen.

Bacteria are microscopic, single-celled organisms that exist in their millions, in every environment, both inside and outside other organisms. Some bacteria are harmful, but most serve a useful purpose. They support many forms of life, both plant and animal, and they are used in industrial and medicinal processes. The beauty of resonance therapy is that you can use only the frequencies to destroy harmful bacteria while antibiotics will also destroy good bacteria such as probiotics.

VIRUSES are the smallest of all infectious agents. They have so few genes and proteins of their own that to reproduce they need to commandeer the machinery of the body's cells they invade. Viruses can affect any part of the body or body system, and can cause infections such as the common cold, flu, gastroenteritis, chicken pox or herpes. The most common type of viral infection involves the respiratory tract.

It is claimed that resonance Waves can destroy all viruses (Antibiotics cannot)

PATHOGENIC FUNGI are fungi that cause disease in humans or other organisms. Approximately 300 fungi are known to be pathogenic to humans.

Parasites are any living things that live in or on another living creature. Human parasites usually include viruses, fungi, bacteria, protozoa, and helminthic worms.

How can one get rid of parasites, viruses, fungi and bacteria?

One's immune system detects the virus and starts producing a chemical called "pyrogens". This chemical will raise your body temperature, causing a fever. Because most viruses only become active (start their reproductive cycle) within a certain narrow temperature range, a fever will slow down, or even halt the virus from attacking new host cells. The virus will die down, and you'll get better.

Antibiotics only have a limited use in the fight against viruses. They won't kill the virus, but they will kill bacteria that – as a result from the viral attack – saw the road cleared to an attack. Sometimes viruses cause inflammatory reactions because the body reacts to the cells that are altered by the virus.

The safest and most effective way to get rid of pathogens in one's body is by applying Resonance (Rife) Therapy with a trusted device such as the Biosonic Frequency Generator.

The **Biosonic Generators** have been developed to generate those frequencies being used in Resonance therapy to destroy pathogens and to treat a wide range of ailments. The manufacturers and distributors of **Biosonic Generators** do not claim that it will cure any ailment. However, a **Biosonic Generator** does generate the frequencies that Dr. Royal Rife found to be beneficial to heal certain ailments. Many people all over the world, including medical practitioners, claim that these frequencies destroy a wide range of bacteria, fungi and viruses. Because of the emphasis of frequencies that combat pathogens, a **Biosonic Generator** can be used to treat in a complementary manner a wide variety of illnesses caused by infections, especially Streptococci and Staphylococci.

The secondary application of the generator is to provide the necessary bioenergy to the body's immune system. Allowing the body to strengthen its own defenses against infectious disease attacks. The **Biosonic Generator** can especially be used in a complementary way in the treatment of cancer. While the body's one defense mechanism is combatting the cancerous cells the Rife's Infection treatment can ensure that the user only has to deal with cancer and not with infections such as flu that can escalate to pneumonia that can weaken the user's immune system further.

For this bioenergy to be effectively utilized by the body, the user must supplement the body with the daily needed minerals and vitamins. A person that undergoes Resonance therapy must be encouraged to drink plenty of water (i.e., at least 4 glasses of clean ozonized water) and to stick to the recommended diet until the series of treatments (A protocol) has been completed.

There are seven basic steps one needs to follow to ensure good health:

1. Ensure that harmful pathogens and cancerous cells in your body are timely destroyed by having regular resonance therapy session.
2. Increase your intake of oxygen by using a Ozonator.
3. Eat clean, nutritious food and take vitamin and mineral supplements.
4. Drink more, clean ozonated or structured water
5. Reduce sugar consumption
6. Exercise
7. Have a positive outlook on life.

When making a choice to live healthier, one sometimes needs a catalyst to achieve the goal. Having a **Biosonic Generator** at your disposal can help you achieve that goal. Suddenly, you are empowered with tools that make a positive change in your life.

Applying a Biosonic Generator

CORRECT PLACEMENT OF ELECTRODES

The hands and feet have energy pathways that lead to all parts of the body. Normally, the easiest way to deliver frequencies to an afflicted organ is to hold the electrodes in the hands or rest the feet on them. The energy pathways in the hands and feet distribute frequencies all over the body.

When using the electrodes under the feet, put a moist piece of paper towel or face cloth that were dipped in warm water with a little salt or Epsom salts added. The conductivity intensity will then be higher.

Keep the cylinders separated too. Do not let them touch it as that will prevent the energy flow going through the body.

INTENSITY SETTINGS

Do not increase the Intensity of the resonance frequencies so high that it causes discomfort. It is a basic rule of thumb to not feel any sensation past your wrist. If your muscles start to twitch, you have the intensity setting too high. (See also the instructions sheet)

IF NOTHING IS FELT

A tingling sensation indicates that the power is sufficient to do the job! The tingling sensation should be felt when using frequencies below 880 Hz on the hands or feet. The best way is to apply the resonance frequencies through the application of holding the electrodes in the hands. Most nerve endings and a main artery are in the region of your hands.

PEMF-Health Matt:

Also read on page 28 about applying the PEMF **Health Mat** instead of the hand electrodes. Please note that one does not “feel” any sensation with the PEMF **Health Mat** as it is a PEMF (Pulsed Electro-magnetic Field) devise that radiates an energy field to convey the resonance frequencies of the generator to the user(s).



Treatment management

Use this easy guide to make your own protocol of treatments.

Just ask two questions:

1. How many treatments per day?

First establish if the treatment is intent to destroy pathogens or is it to heal an organ in your body?

Pathogen destroying frequencies. Too many treatments per day of the pathogen destroying frequencies may make one nauseous if you do not drink water to cleanse the liver. Refer to Resonance therapy effects on page 11.

Body healing frequencies: One can treat as many times as you want with Bio-frequencies without side effects. (See also page 15 regarding the safety aspects of Resonance therapy).

2. Which treatment should be used and for how long?

First: Establish whether the health problem is acute or chronic?

“Acute ailments” refer to illnesses that have a rapid onset and follow a short but severe course. Examples are colds, flu, and spider bites.

“Chronic ailments” refer to illnesses or medical conditions that are characterized by long duration or frequent recurrence. Diabetes and hypertension are examples of chronic diseases.

Acute Treatment Protocol: Acute health problems such as a wound or cold need to be treated with treatments that focus on that specific health issue.

Chronic Treatment Protocol: Chronic diseases must be managed with a series of various treatments. Each user's requirements will differ, and one must adapt or change treatments when necessary (See, for example, alternative treatments on pages 17 to 18).

Protocols (what to treat and how many times):



Identify: Acute or Chronic

Identify if the ailment/disease or health problem is **Acute** or **Chronic**.

ACUTE AILMENT TREATMENT PROTOCOL

A typical treatment protocol for an ACUTE ailment should be treated with the appropriate treatment: E.g. Spider bite:

Treatment 1: Insect Bites treatment

Treatment 2: Infections treatment

Treatment 3: Insect Bites treatment

Treatment 4: Infections treatment

Try to treat 4 specific treatments in one day keeping in mind the Herxheimer Reaction

Keep on doing this until the symptoms disappear or if not change to a chronic ailment protocol.

One will continuously treat acute problems with as many treatments per day while drinking as much water as possible to flush out the dead bacteria, viruses, and toxins. Only do a Detox treatment when improvement in the acute condition is visible.



CHRONIC AILMENT TREATMENT PROTOCOL

Here follows a suggested protocol of treatments for Cancer (This protocol also acts as **an example to treat other chronic diseases** such as arthritis. Just replace the "Cancer" treatment with arthritis or whatever chronic ailment you want to address):

First 8 days only one (1) treatment per day.

- | | |
|--------------|--|
| Treatment 1. | Detox treatment (Do not use Detox when receiving Chemotherapy) |
| Treatment 2. | Cancer treatment |
| Treatment 3: | Infections treatment |
| Treatment 4: | Cancer treatment |
| Treatment 5: | Cancer treatment |
| Treatment 6: | Parasites treatment |
| Treatment 7: | Infections treatment |
| Treatment 8: | Cancer treatment |

From the 9th day more treatments can be taken as long as the user does not get a Herxheimer Reaction/Healing crisis (Page 22). See also the Cancer Treatment suggestion on page 23.

Continue chronic treatments by concentrating on the specific related treatment (The Cancer treatment for cancer, the Arthritis treatment for arthritis etc.). The best results should be with daily treatments. Also apply the Parasite treatment once every 2nd week and apply the Pain treatment whenever necessary. When the user feels depressed apply the Neuro treatment. The Detox treatment is only necessary once a month if you drink enough clean water.

See on pages 25 and 26 what other suggested treatments one can use in conjunction with the main treatment to address the specific health problem.

Most users suffering from a chronic ailment usually start to feel more energized after only one treatment but only start to feel healthier after about 2 weeks of continuous treatments.

Follow up treatments:

The user should manage his/her follow up treatments.

In the case of sinusitis, it is for example prudent to have another specific sinusitis treatment the following week. Two weeks can then be skipped to be followed with another specific sinusitis treatment. If the sinusitis has been cleared the user can safely schedule his/her next treatment

Detoxing

IT IS STRONGLY RECOMMENDED THAT A USER DOES A DETOX TREATMENT BEFORE STARTING HIS/HER INITIAL TREATMENT PROTOCOL/SCHEDULE (NOT before every treatment). AFTERWARDS ONE DETOX TREATMENT A MONTH SHOULD BE ADEQUATE.

Do not use the Detox treatment when undergoing Chemotherapy.

What treatment to use?

The **Biosonic Generators'** list of treatments is straightforward. Just be logical when trying to select which treatment to use. If your specific health condition is not listed on the pre-set Treatment List, research the causes and symptoms and where applicable treat with a Broad-spectrum treatment.

On the installed default list on the **Biosonic Generator** are the very effective Broad-spectrum Treatments such as "Infections" and "Respiratory" of which each treats a wide range of ailments. The **Biosonic Generator** has treatments for all ailments that can be treated with resonance therapy. Most generators on the market may have many more treatments stored on their devices but they are untested treatments. The user is then confronted with literally hundreds of treatments, for example for cancer which the manufacturers just downloaded from the Internet from dubious sources. It is then expected from the user to experiment with untested treatments to find the treatment that works. A user with a terminal disease has no time to experiment. The beauty of the **Biosonic Generator** is that it is effective: Not only because they comply with the specifications of a real generator but also because of its tested list of treatments.

The **Biosonic Generator** range is pre-programmed with the most common conditions that can be treated with Rife Therapy. The treatments include the "Sweep" treatments and "Sets" of treatments (Groups).

The tested broad-spectrum treatments such as "Neuro" and "Respiratory" of which each treats a wide range of ailments have also been included on the frequencies treatment lists.

Find the relative treatment for a complaint that is not listed.

If your specific health condition is not listed on the Rife's pre-set Treatment List, research the causes and symptoms and where applicable treat with a Broad-spectrum treatment. One can for instance apply the "Neuro" and "Pain" treatments to treat Trigeminal Neuralgia (That is not listed on the treatment list) as this is nothing else but a chronic pain condition that in this case is caused by pressure on the trigeminal nerve. One can also experiment with the Inflammation treatment to see if one can reduce the pressure on the trigeminal nerve.

Your Bioresonance Practitioner can design and program the BIOSONIC Generator with a specific treatment customized to your specific condition.

Broad-spectrum treatments

The 10 most used Broad-spectrum treatments are on top of the default List:

1. Cancer Main	6. Inflammation
2. Circulation	7. Neuro
3. Dental foci	8. Pain
4. Detox general	9. Parasites general
5. Infections general	10. Respiratory

When one activates any treatment on the list it will also go up to the top of the list as it will be also considered as a “favorite” treatment.

Concentrate on the treatment for the specific ailment/disease and use the other suggested treatments to support the main treatment. E.g. for Acne use the “Acne” treatment but, if possible, use also “Infections” and “Skin problems”. Always try to include the parasite and detox treatments in the regimen (protocol) of treatments. If your ailment is not in this list use the above guidelines and look for similar symptoms and treat with a Broad-spectrum treatment.

Broad-spectrum treatments on the Biosonic Generators:

A few broad-spectrum treatments are listed on the **Biosonic Generator's** default list to address those ailments when a diagnosis is unclear, or one wants to cover a broader range of causes of a particular health problem. Look also for treatments identified as “Main” or “General”. Listed below are examples of the most used broad-spectrum treatments:

Cancer (Main):

A treatment that includes the basic cancer-destroying frequencies that Dr Rife discovered (See the book *The Cancer Cure That Worked* by Barry Lynes). Use this treatment for all cancer and cancer-related diseases.

Circulation:

A treatment to address high blood pressure, swelling, low blood sugar and general circulatory problems.

Detox:

A treatment to cleanse the liver. **Eye Problems**

A treatment to treat all possible eye problems including cataracts and macular degeneration.

Fat Trimmer:

A treatment to address those common problems that cause excess fat accumulation in the body.

Fatigue:

A treatment to address those common problems that cause fatigue and lack of energy. Apply this treatment early in the day. Also use Circulation and the Neuro treatments. Also, experiment with the CFS (chronic fatigue syndrome) treatment.

Flu:

A treatment to address the common opportunistic viruses that accompany influenza.

Infections:

A treatment to address the common pathogens that cause infections. With this treatment, one can treat any “-itis,” such as bronchitis, sinusitis, laryngitis, etc. Always try to include the infection treatment in your protocol or as a supportive treatment, as explained on p17.

Gum diseases

The “Gum diseases” treatment and regular dental hygiene practices such as brushing and flossing keep your mouth (And body) healthy.

Neuro:

The treatment features frequencies that relate to the neurological system as well as the frequencies to treat pain. Use for depression, anxiety, motion neuron disease, stroke rehabilitation and fatigue.

Osteo/Bone Regeneration

A treatment to address arthritis, osteoporosis, fractures, and joint pains. Also, use the Pain and Inflammation treatments.

Pain

A treatment to address the common causes of any pain, including headaches and migraine.

Parasites

A treatment to treat the most common parasites. Parasites are a contributing factor to 40% - 75% of all illnesses. It is, however, very difficult to detect their presence. Treat patients on a regular basis with this treatment, especially in the case of asthma, psoriasis, osteomyelitis, fibromyalgia, hepatitis C, halitosis, endometriosis, cystic fibrosis, bacterial infections, and pruritus.

Respiratory

A treatment to treat the most common causes of respiratory ailments such as coughing, flu, asthma, bronchitis, and pneumonia.

Skin Problems

A treatment to treat the main causes of skin problems. Use also for Rosacea.

“Tonic” treatments

There are several “tonic” treatments list on the treatment list, such as Heart Tonic and Liver Tonic. These treatments are maintenance treatments to keep that specific organ in good health.

Sweeps

Sweeps are quick treatments that run rapidly between two specific frequencies. Instead of the usual 3 minutes plus per frequency, “Sweeps” spends only 1 minute per frequency. One can use the “repeat” function on the Rife Generators to extend the duration of a sweep treatment.

The “Sweep Treatments” are the treatments that can be used if limited time is available for treatment or if want to use the treatment continuously with for example the PEMF-Health Matt. The Sweep Treatments run rapidly through the relevant frequencies for a quicker treatment. The “Repeat” function can be activated with the Sweeps and this continuous running time can be discontinued any time when the user chooses to do so.

The following Sweep Treatments are on the default list:

Sweep Brain Waves Clarity. It sweeps through the Beta brain Rife frequency range. This treatment evokes outward awareness, the taking in and evaluating of various forms of data received through the senses. A good treatment to use when studying or having brain fog.

Sweep Brain Waves Relaxation. It sweeps through the Alpha brain Rife frequency range. This treatment evokes a non-drowsy but relaxed, tranquil state of consciousness, primarily with pleasant inward awareness; body/mind integration. Use for relaxing.

Sweep Brain Waves Sleep. It sweeps through the Theta brain Rife frequency range. This treatment induces sleeping. Use for insomnia and anxiety.

Sweep Cancer. It sweeps through the cancer frequency range.

Sweep Coronavirus. It sweeps through the Coronavirus and its variants frequencies range.

Sweep Cats Purr. It sweeps between 1 and 50 Hz. This is the range that cats purr. Research has shown that a cat’s purr has healing capabilities. This sweep includes the relaxing Schumann resonance frequency (7.8 Hz) and the circulation frequency (20 Hz)

Sweep General Infections. This sweep covers the most viruses, bacteria, parasites that cause infections or are opportunistic pathogens in the presence of an infection.

Sweep Muscle Healing. Use for muscle pain, injuries and spasms.

Sweep Wound Healing. It sweeps through the Epsilon brain Rife frequency range. This treatment induces a feeling of well-being as well as pituitary stimulation to release growth hormones. Use for relaxation and wound healing.

Sets (Groups):

A set or group is a combination of treatments that run one after the other. Relevant treatments are grouped together to run one after the other for a duration of about 6 hours or more. It is ideally suited to use while sleeping on the PEMF **Health Matt** (See p.28) that is connected to your **Biosonic Generator**.

<p>The following sets of treatments are listed as default on the Rife Generators:</p> <p>Set Arthritis</p> <p>Set Cancer general. Set Circulation</p> <p>Set Coronavirus</p> <p>Set Dental and Gums Set Depression</p> <p>Set Detox</p> <p>Set Diabetes</p> <p>Set Fatigue</p> <p>Set Flu</p> <p>Set Fungi and Candida Set Gallbladder</p> <p>Set Health Maintenance</p>	<p>Set Infections</p> <p>Set Insomnia</p> <p>Set Intestines and stomach.</p> <p>Set Kidneys and Bladder</p> <p>Set Liver</p> <p>Set Lyme's Disease</p> <p>Set Pain</p> <p>Set Parasites</p> <p>Set Prostate</p> <p>Set Respiratory</p> <p>Set Skin Problems</p> <p>Set Sport Injuries</p> <p>Set Tropical diseases.</p> <p>Set Weight Loss</p>
---	--

Make your own sets or treatments with the Biosonic Software (See page 27)

Ranges:

The **Biosonic Generator** also offers "range" treatments on the Treatment List for cases with multiple mutations or variations of pathogens that require multiple frequencies in a range of treatments. Use a range especially if you want to target a specific pathogen that may have mutated to a new frequency. The Flu virus is a good example of a pathogen that keeps on mutating.

When will positive results be experienced?

The time to experience positive results varies widely with the condition.

Pain relief and a surge of energy is a good indication that there is a health improvement in progress.

Another effect that most people experience after a treatment with a **Biosonic Generator** is experiencing a sense of calmness and energy. That is because the nerve points in the hands were stimulated (in the case of treatment with hand electrodes).

Urine may also become darker and greasy after the first few sessions as toxins leave the body through the kidneys.

Users with cancer may notice a decrease in pain, as well as a change in the size of their tumour after about 3 months of regular treatment.

In ACUTE conditions, results may be noticeable in 1 to 6 hours, providing the frequencies selected are effective for that condition. Acute conditions include flu, wounds, fever, infections etc. (See also pages 13 and 14). In the case of treating an acute health problem the user should continue treatments for another few days after all symptoms are gone. Slowly cut back in treatment frequency. This is much the same as when taking antibiotics. They are used days after all symptoms have disappeared and usually at a decreasing rate.

On the other hand, it may take 1 to 3 months to experience positive changes in chronic ailments, such as in the case of arthritis and especially cancer. In the case of treating a chronic ailment the user should use the treatment protocol indefinitely even after all symptoms disappear. (See Follow-up Treatments on page 16)

With very serious health conditions, including those considered “incurable” by any conventional means, it is wise to continue periodic treatment on a regular basis as insurance against recurrence or a relapse.

Herxheimer Reaction:

Resonance Therapy should have no side effects but may create in some cases a Healing Crisis (Nausea, headaches, or skin rashes), otherwise known as a Herxheimer Reaction. This happens when the user does not consume enough water to flush out the dead pathogens due to too many pathogen destroying treatments on one day. A Herxheimer Reaction is caused by the toxin residue from the destroyed pathogens. That is why a chronic ailment protocol recommends only one resonance treatment per day for the first few days.

If a user has an infection, in a tooth, for instance, millions upon millions of bacteria would inhabit that tooth and the surrounding area. When a Rife machine, such as the **Biosonic Generator**, is applied, the bacteria all rupture. This debris has to be escorted out of the body through the skin, bowels, and urinary tract. In the case of severe infections, the initial detox can be pronounced. The good news is that the first reaction is always the worst, and there rarely is a second reaction.

Some users may have difficulty sleeping the night after the first session due to increased energy. Other users may experience what they believe to be a full-blown cold the next day. One way to distinguish a cold from a healing crisis is that the client still has energy during a healing crisis. On rare occasions, a rash may appear. If this happens, it will disappear within 72 hours. Using medication on this rash will only force back in a poison the body is trying to expel. Users with bladder infections, PID or chronic yeast infections may notice a urinary discharge.

Finally, passing a dead worm into the toilet is not unheard of after receiving a parasite frequency. It is essential to remind the users that a healing crisis is always temporary and that it is better to have the offending micro-organism dead and, on its way, out rather than alive and on the inside of one's body.

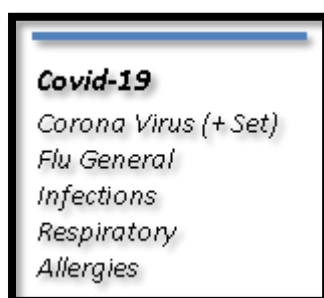
Cancer treatment protocol suggestion

The "Cancer Main" treatment is your primary treatment to address cancer. The "Cancer Main" treatment includes all the different cancer-destroying frequencies. You should also use the "Infections" treatment with the "Cancer Main" treatment. You can do both treatments more than once every day. At night while lying on the "PEMF-Health Matt" you can set your **Biosonic Generator** on "REPEAT" to run the "Set Cancer General". For a quick treatment with only a few minutes to spare, use the Sweep Cancer. See also the protocol example for chronic ailments (Page 15). The **Biosonic Generator** can primarily be used in complementary ways to treat cancer. While the body's one defense mechanism is fighting the cancerous cells, the Rife's Infection treatment can ensure that the user only has to deal with cancer and not with infections such as flu that can escalate to pneumonia, which can further weaken the user's immune system.

Good Health Maintenance Protocol:

Using the other standard "Broad-spectrum" treatments is always beneficial to stay in good health if time permits. Treatments such as: "Circulation", "Parasites", "Detox" to get rid of toxins and "Neuro" for energy and relaxation. The "Gum disease" treatment and regular dental hygiene practices such as brushing and flossing keep your mouth (and the rest of your body) healthy.

How to treat yourself against Covid



If you are infected with the Coronavirus, approach the treatment as if it is an acute disease that is going to need at least 20 days of aggressive Rife treatments. Keep treating yourself with Infections, Respiratory, the Coronavirus Treatment and Set Coronavirus (Especially with the PEMF **Health Mat** as explained on page 20). Treat yourself as many times per day as possible. When you go in the coughing fits stage treat yourself also with the Respiratory

Treatment. Do also the cell healing and/or Wound Healing treatments to repair damaged lung tissue. Use an ozone generator in your workplace or home to keep your environment free from the coronavirus or any other airborne pathogens.

The Weight Loss Protocol:

The best way to lose weight is to lose it slowly but on a constant basis. A rapid weight loss on the other hand is usually only successful for a short period of time, but then the body goes into trauma and tries to store as much fat as possible to prevent another sudden and severe weight loss attempt.

This very effective resonance treatment should be approached as a chronic disease if you have serious weight loss problems. Do not follow this protocol if you suffer from the health disorders bulimia and/or anorexia. For the first two weeks on this protocol, one must not consume any sugar (this includes fruit). Do not eat anything that contains yeast (Bread, cake, beer etc.). No alcohol for 2 weeks. After 2 weeks it would be wise to continue this diet to help speed up the fat loss process.

On the Resonance therapy side start with the normal detox and parasite treatments in the first week as explained in the example of a chronic disease protocol.

From the 2nd week:

Day 1: Fat Trimmer	Day 5: Fat Trimmer
Day 2: Circulation	Day 6: Detox
Day 3: Detox	Day 7: Circulation
Day 4: Fat Trimmer	

Keep repeating the above sequence of treatments for at least 3 months or until you have reached your target weight. One can also add extra treatments by running the Weight Loss Set while sleeping on the PEMF **Health Mat** while this Set runs. Drink at least 4 glasses of water per day on the detoxing days.

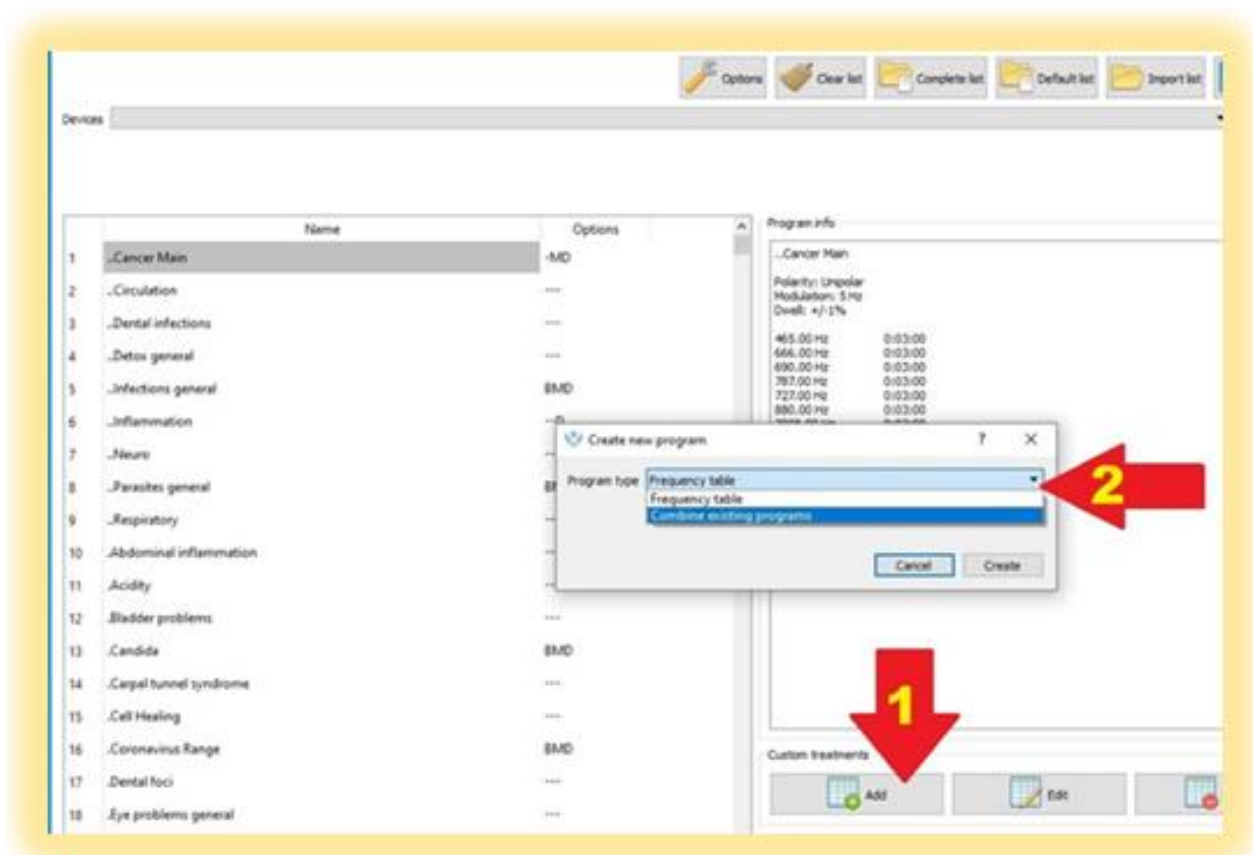
Guide to supportive treatments (Which other treatments to use?)

Below follows a list of the common ailments and diseases with an indication of other treatments that can be used in conjunction with the specific health problem. Concentrate on the treatment for the specific ailment/disease and use the other suggested treatments to support the main treatment. E.g., for Acne use the “Acne” treatment but, if possible, use also “Infections” and “Skin problems”. Always try to include the parasite and detox treatments in the regimen (protocol) of treatments. If your ailment is not on this list use the above guidelines and look for similar symptoms and treat them with a broad-spectrum treatment (See page 18). The Sets (Page 21) include supportive treatments and are ideal to use with the PEMF **Health Mat** (Page 28).

Abdominal Pain: acute, severe (Obtain medical advice)	Backache	Constipation
Infections	Pain	Infections
Parasites General	Inflammation	Neuro
Detox	Set: Sport Injuries	Circulation
Circulation		
Acne	Blood Pressure	Cramps
Infections	Circulation	Neuro
Skin Problems	Neuro	Pain
Detox		
Adenoids	Boils	Cystic Fibrosis
Infections	Infections	Infections
	Circulation	Neuro
	Skin Problems	
	Detox	
AIDS	Cancer (Any kind)	Diabetes
Infections	Cancer Main	Circulation
Immunity boost	Infections	Inflammation
	Lymph Drainage	
Allergies	Parasites General	Diarrhea
Infections		Infections
Respiratory		Circulation
Alopecia (Hair loss)	Candida	Drug Addiction
Infections	Fungi	Neuro
Circulation		Circulation
	Catarrh (Mucous Inflammation)	Detox
	Infections	
	Circulation	
Anemia		Ear problems
Infections	Cerebral Palsy	Infections
	Neuro	
Aneurism	Stroke	Fat Trimmer
Infections		Hormonal Imbalances
	Chickenpox	Detox
Apoplexy Paralysis	Infections	
Neuro		Glands
	Colic	Infections
Arthritis/Rheumatism/Gout	Respiratory	Circulation
Bone/Osteo	Infections	Swelling
Inflammation		
Pain	Colitis	Gout
	Infections	Inflammation
Asthma	Neuro	Circulation
Respiratory		Pain
Aspergillus		
Arteriosclerosis	Conjunctivitis	Gums diseases
Circulation	Infections	Infections
		Dental Foci

Headaches	Malaria	Rheumatism
Neuro	Parasites general	Osteo/Bone
Infections		Infections
Pain		
Hemorrhoids	Meningitis	Sciatica Nerve
Infections	Infections	Set Sport Injuries
Liver Tonic	Motion Neuro Disease	Inflammation
	Infections	Neuro
Hepatitis	Neuro	
Infections	Sweeps: Brain Waves	Shingles
		Infections
Hernia	Multiple Sclerosis	Herpes General
Infections	Infections	Skin Problems
Set Sport Injuries	Neuro	
Wound Healing	Sweeps: Brain Waves	Sinusitis:
		Infections
Herpes	Mumps	Respiratory
Infections	Infections	
		Spider bite
Influenza / Cold	Muscles	Detox
Flu General	Infections	Infections
Respiratory	Neuro	
Infections	Set: Sport Injuries	Stroke
		Neuro
Insect Bites	Muscular Dystrophy	Circulation
Infections	Infections	Sweeps: Brain Waves
Detox	Neuro	
	Set: Sport Injuries	Sunstroke
Insomnia		Circulation
Set Insomnia	Neuralgia	Sweeps: Brain Waves
Neuro	Infections	
	Neuro	Tetanus
Jaundice		Infections
Infections	Osteomyelitis	
Liver Tonic	Infections	Thrush
	Inflammation	Infections
	Circulation	Neuro
Joint inflammation		Thyroid
Osteo/Bone	Ovary problems	Hormonal Imbalances
Infections	Infections	Circulation
Inflammation	Inflammation	
	Neuro	Tinnitus
Kidneys		Infections
Infections	Pancreas	Circulation
Circulation	Infections	
	Circulation	Tonsillitis
Knee problems		Infections
Inflammation	Pharyngitis	
Circulation	Infections	Ulcers
Set: Sport Injuries	Respiratory	Infections
		Cell Healing
Lumbago	Pneumonia	Helicobacter Pylori (ulcer)
Osteo/Bone	Infections	
Neuro	Respiratory	Whooping Cough
Set: Sport Injuries		Respiratory
	Prostate Problems	Infections
Lymph problems	Circulation	
Lymph drainage	Infections	Worms
Circulation		Parasites
	Psoriasis	Infections
	Infections	
	Skin problems	

Software to edit treatments (Available from supplier)



The complete list of resonance therapy treatments that have proven valuable to users has already been installed on the **BIOSONIC** Generators. The outbreak of the Covid pandemic has, however, shown that new treatments may sometimes need to be added. Please do not upload any unnecessary, untested frequencies from dubious sources.

Ask your Bio-Resonance Practitioner for assistance on loading the software to add more accredited treatments.

1. Click on “ADD” to add a Treatment or a SET OF TREATMENTS.
2. Select to add one treatment or to combine existing treatments on the list to a new SET.
3. Save the adjusted treatment list to your computer.
4. Connect your Q Rife Unit to your computer.
5. Click on “CONNECT” on the INTERFACE screen and your unit’s data will appear on the top.
6. Click on “TO DEVICE” to upload your own updated list to your unit.



The Beamer PEMF Health Mat

For pulsed electromagnetic field (PEMF) treatments.



The Beamer PEMF **Health Mat** is an electromagnetic matt and an accessory to the **Biosonic Generators** that connects to a **Biosonic Generator** to create a healthy radiant Pulse Electromagnetic Field (PEMF) in a vortex of about 90 cm around the mat to convey the resonance frequencies of the attached generator.

The PEMF **Health Mat** connected to a generator is suited to treat animals and people that cannot hold the electrodes or for those that need extra treatments while sleeping (Using the repeat function on the generator) or doing something else. The PEMF **Health Mat** close by is ideally suited to use with a Sets of treatments,

It is covered with waterproof vinyl on one side and durable fabric on the other side. Use the vinyl side on top if there is a possibility that the PEMF **Health Mat** could get soiled.

Apply the PEMF Health Mat especially to:

- Reduce pain and inflammation
- Improve energy/circulation, blood/tissue oxygenation
- Regulate blood pressure and cholesterol levels as well as the uptake of nutrients
- Increase cellular detoxification and the ability to regenerate cells
- Accelerate repair of bone and soft tissue
- Relax muscles.